

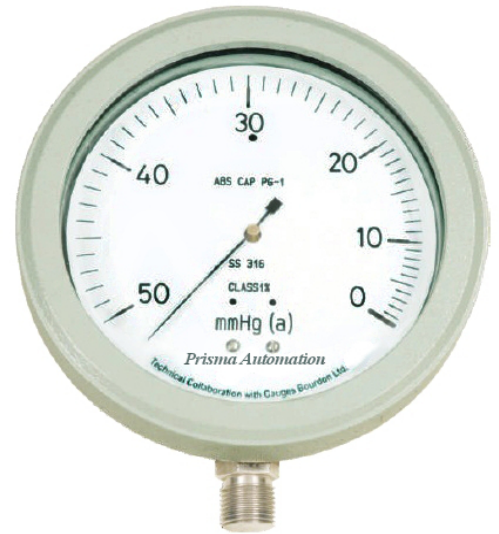
Absolute Pressure Gauges

MODEL : APG

Why Absolute Pressure Gauge?

The atmospheric pressure varies from place to place depending up on the altitude of the location and prevailing weather conditions. In such variable conditions, precise pressure measurement can be arrived only if a fixed (un-changing) reference point is established.

For this purpose we have developed element of Twin Bellows, one of the same is totally evacuated and sealed, which shall be the reference point for calibration i.e. Absolute Zero. These twin bellows are connected through a special type of movement, by which any change in the atmospheric pressure is compensated, and thereby the gauge gives the absolute pressure irrespective of the location.



Features

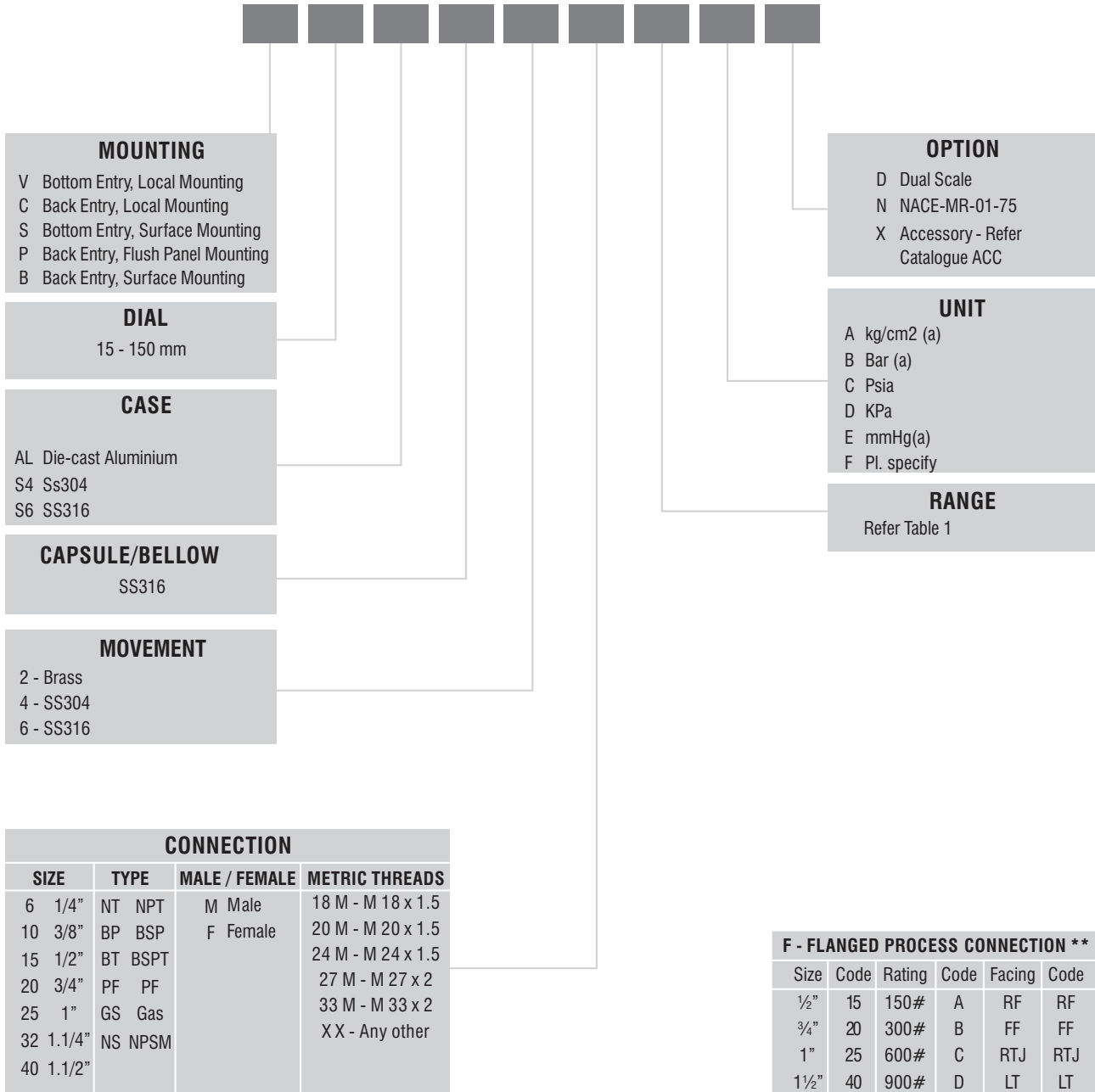
- Compliance to latest EN-837 standard
- Range : 760-0 mmHg
- Capsule/Bellow in SS316 as standard providing better mechanical properties guaranteeing repeatability and accuracy
- Accuracy $\pm 1\%$ FSD
- Unit of measurement - mmHg, mmWC

Specifications

Ref. Standard	EN-837
Dial	150 mm in Aluminium, white background, black markings
Case	Diecast aluminium / Ss304 / SS316 with screwed bezel
Protection	IP-67 (IS :13947 Part I)
Sensor	Capsule / Bellow in SS316
Socket	22mm Square in SS316
Movement	Brass, SS304, SS316
Connection	1/2" NPT (M) as standard (other optional)
Accuracy	$\pm 1\%$ FSD
Overrange	130% FSD (other on request)
Suitability	(-) 20°C to 80°C (service temperature)
Zero adjustment	External
Optional	NACE compliance

Ordering Information

MODEL : APG



** For Flanged Process Connection refer the table (mentioned separately)